



FREE FLOAT STEAM TRAP

MODEL JH3B CAST STEEL

FREE FLOAT STEAM TRAP WITH THERMOSTATIC AIR VENTING

Features

A reliable and durable cast steel free float trap with tight shut-off for use on small to medium-size process equipment.

1. Self-modulating free float provides continuous, smooth, low velocity condensate discharge as process loads vary.
2. Constant water-seal design ensures steam-tight seal, even under low-load conditions.
3. Only one moving part, the free float, eliminates concentrated wear and provides long maintenance-free service life.
4. Thermostatic bimetal air vent valve vents air automatically for rapid start-up.
5. Easy, inline access to internal parts simplifies cleaning and reduces maintenance costs.
6. Built-in screen with large surface ensures trouble free operation.



Specifications

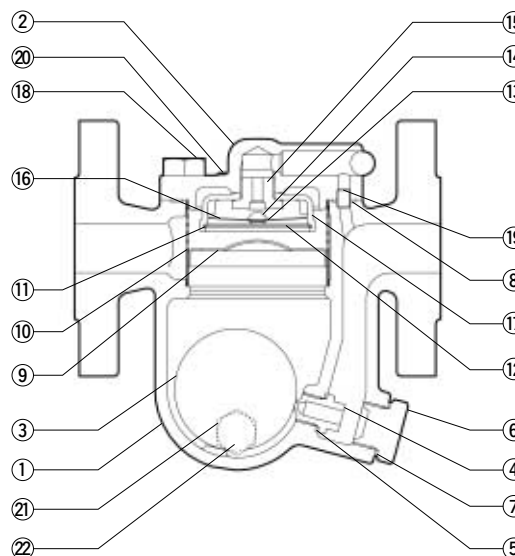
Model	JH3B
Connection	Flanged
Size	DN 15, 20, 25
Orifice No.	2, 5, 10, 14, 22, 32
Maximum Operating Pressure (barg) PMO	2, 5, 10, 14, 22, 32
Maximum Differential Pressure (bar) ΔPMX	2, 5, 10, 14, 22, 32
Maximum Operating Temperature (°C) TMO	350

PRESSURE SHELL DESIGN CONDITIONS (**NOT** OPERATING CONDITIONS): Maximum Allowable Pressure (barg) PMA: 32 1 bar = 0.1 MPa
Maximum Allowable Temperature (°C) TMA: 350



To avoid abnormal operation, accidents or serious injury, DO NOT use this product outside of the specification range. Local regulations may restrict the use of this product to below the conditions quoted.

No.	Description	Material	DIN*	ASTM/AISI*
①	Body	Cast Steel GS-C25	1.0619	A216 Gr.WCB
②	Cover	Cast Stainl. Stl. A351 Gr. CF8	1.4312	—
③ ^F	Float	Stainless Steel SUS316L	1.4404	AISI316L
④ ^R	Orifice	—	—	—
⑤ ^{MR}	Orifice Gasket	Soft Iron SUYP	1.1121	AISI1010
⑥	Orifice Plug	Stainless Steel SUS303	1.4305	AISI303
⑦ ^{MR}	Orifice Plug Gasket	Soft Iron SUYP	1.1121	AISI1010
⑧ ^{MR}	Cover Gasket	Graphite/Stainl. Stl. SUS316L	- /1.4404	- /AISI316L
⑨ ^R	Float Cover	Stainless Steel SUS304	1.4301	AISI304
⑩ ^R	Screen inside/outside	Stainless Steel SUS430/304	1.4016/4301	AISI430/304
⑪ ^R	Snap Ring	Stainless Steel SUS304	1.4301	AISI304
⑫ ^R	Air Vent Screen	Stainless Steel SUS304	1.4301	AISI304
⑬ ^R	Snap Ring	Stainless Steel SUS304	1.4301	AISI304
⑭ ^R	Air Vent Valve Plug	Stainless Steel SUS416	1.4005	AISI416
⑮ ^R	Air Vent Valve Seat	Stainless Steel SUS303	1.4305	AISI303
⑯ ^R	Bimetal Plate	—	—	—
⑰	Bimetal Case	Cast Stainl. Stl. A351 Gr. CF8	1.4312	—
⑱	Cover Bolt	Carbon Steel S45C	1.0503	AISI1045
⑲	Connector	Stainless Steel SUS416	1.4005	AISI416
⑳	Name Plate	Stainless Steel SUS304	1.4301	AISI304
㉑	Drain Plug Gasket**	Soft Iron SUYP	1.1121	AISI1010
㉒	Drain Plug**	Carbon Steel S25C	1.1158	AISI1025



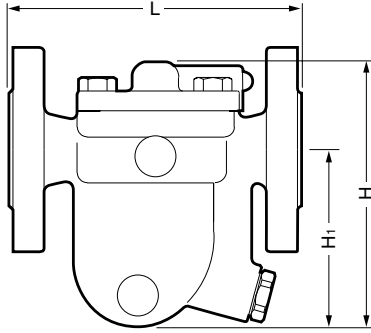
Copyright © TLV

* Equivalent materials ** Option

Replacement kits available: (M) maintenance parts, (R) repair parts, (F) float

Dimensions

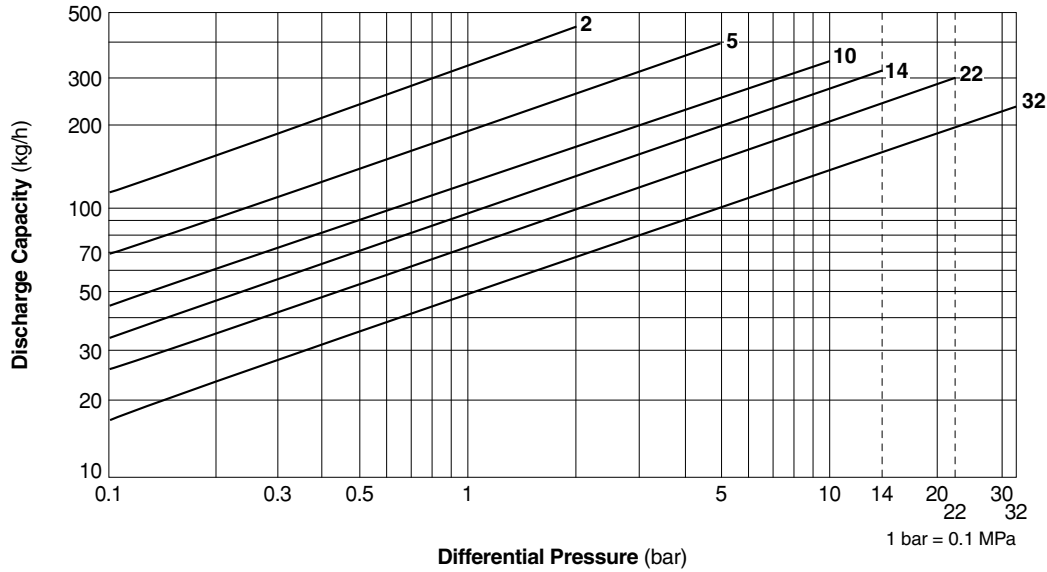
● **JH3B** Flanged



JH3B Flanged (mm)

DN	L		H	H ₁	Weight (kg)
	DIN 2501	PN25/40			
	15	150			
20	150	136	91	5.0	
25	160	140	140	92	5.6

Discharge Capacity



1. Line numbers within the graph refer to orifice numbers.
2. Differential pressure is the difference between the inlet and outlet pressure of the trap.
3. Capacities are based on continuous discharge of condensate 6 °C below saturated steam temperature.
4. Recommended safety factor: at least 1.5.



DO NOT use traps under conditions that exceed maximum differential pressure, as condensate backup will occur!

Manufacturer

ISO 9001/ISO 14001

TLV CO., LTD.
Kakogawa, Japan

is approved by LRQA Ltd. to ISO 9001/14001

